



Jaz

MOBILE SHOWER COMMUNE CHAIRS

Enhanced Seating Comfort

Exceptional Quality

Innovative Design



Jaz-SP Self Propelled
(shown with optional SoftJaz Seat Overlay)



Jaz-AP Attendant Propelled

Jaz Mobile Shower Commode Chairs are exceptionally durable, easy to clean, and ideal for infection-control environments.

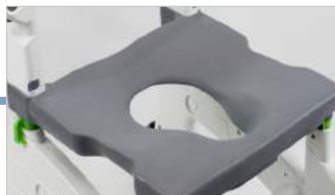
FEATURES



Molded, composite frame – durable and easy to clean



Height-adjustable without tools – for toilet bowl clearance and matching transfer heights



Contoured seat for best-in-class comfort



Swing-in/Swing-out – removable foot supports – facilitates transfers



Soft and flexible back support – comfortable and easy to clean



Flip-up arm supports – aids in transfers



Dual-locking casters (swivel and roll) – stabilize chair for toileting, bathing and transfers



Commode pan with lid – includes anti-splash baffle and high-gloss surface to ease cleaning

OPTIONS



SoftJaz seat overlay – molded and contoured for pressure distribution and unrivaled comfort



Pelvic positioning belt with side-release buckle



Chest belt – One-piece with hook and loop fastener



Snap-on Bodypoint Calf strap – dries quickly



Arm support locks – provide more security during transfers



Swing-away laterals – provide lateral trunk support



Head support – molded pad with fixture, adjusts in height and fore/aft



Quick-release axles (Jaz-SP) – makes transporting the chair easier

SPECIFICATIONS	Jaz-AP	Jaz-SP
WEIGHT CAPACITY	330 lbs (150 kg)	330 lbs (150 kg)
SEAT WIDTH	19" (48 cm)	19" (48 cm)
SEAT DEPTH (front of back post to front of seat)	17" (43 cm)	17" (43 cm)
BACK WIDTH	18" (46 cm)	18" (46 cm)
BACK HEIGHT (from top of seat to top of upholstery)	17" (43 cm)	17" (43 cm)
TOILET HEIGHT CLEARANCE	15.4" - 20.4" (39 - 51 cm)	15.4" - 20.4" (39 - 51 cm)
TOILET WIDTH CLEARANCE	15.7" (40 cm)	15.4" (39 cm)
ARM SUPPORT HEIGHT ABOVE SEAT *	8" (20 cm)	8" (20 cm)
SEAT-TO-FLOOR HEIGHT * – 1" (2.5 cm) increments	19" - 24" (48 - 61 cm)	19" - 24" (48 - 61 cm)
OVERALL WIDTH	23" (58 cm)	26" (66 cm)
PRODUCT WEIGHT	38 lbs (17 kg)	48 lbs (22 kg)
FRAME MATERIAL	Molded Composite	Molded Composite

* without SoftJaz seat overlay



753011 Second Line EHS, Orangeville, ON L9W 5W4
 T: (866) 875-2877 • (519) 942-8441 F: (866) 875-2878 •
 (519) 942-2186 • info@dynamichcs.com www.dynamicHCS.com

WARRANTY

Two-year limited warranty on the base and back frame components.
 One-year on remaining components subject to normal wear and tear exclusions.
 *SEE OWNERS MANUAL FOR COMPLETE DETAILS.