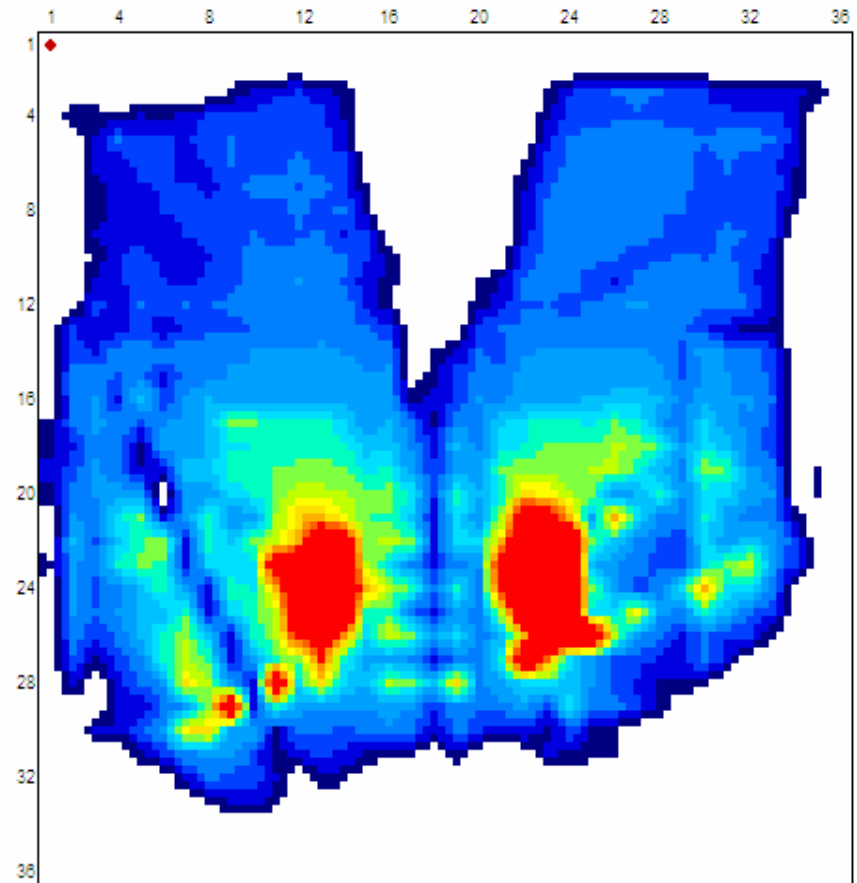


Ride Forward vs. Visco-elastic Competitor

This short study demonstrates the consistent performance of the Ride Forward cushion across a wide range of temperatures, time and age. Though this study would not stand up to strict scientific scrutiny, it illustrates how temperature can influence cushion performance, and has implications for use of pressure mapping in the clinical setting.

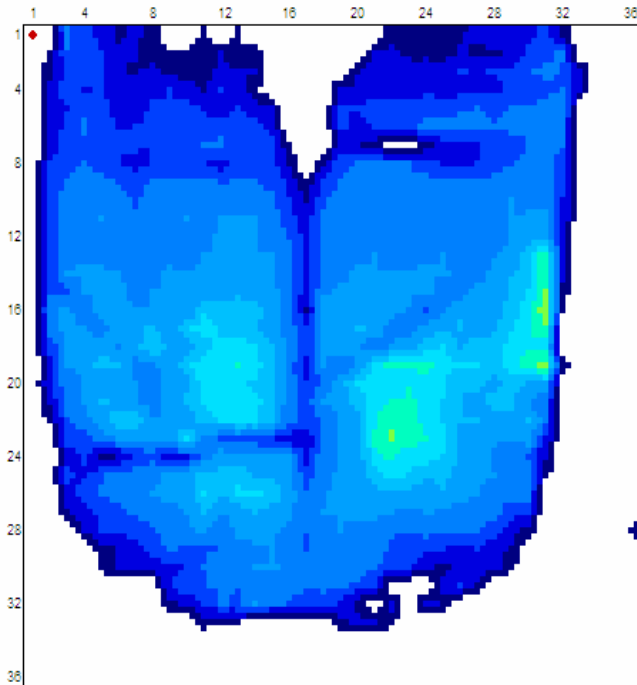
Baseline on Tight Sling

- Avg Pressure: 53.32
- Peak Pressure: 220
- Contact Area: 210
- PPI: 220
- PPI (peak pressure index)= average of peak pressure cell and 8 adjacent cells

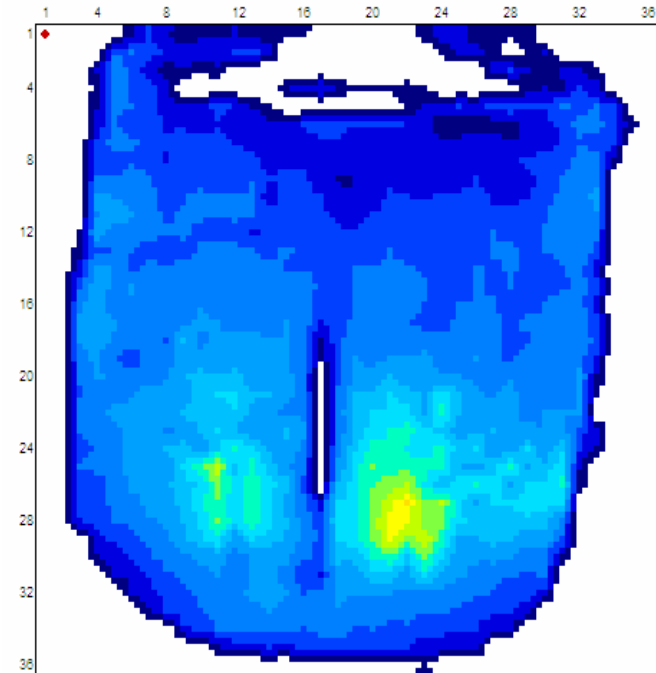


Visco-elastic Based Competitor

- Room Temperature
 - Avg pressure: 40.76
 - Peak Pressure: 91
 - Contact area: 225
 - PPI: 76

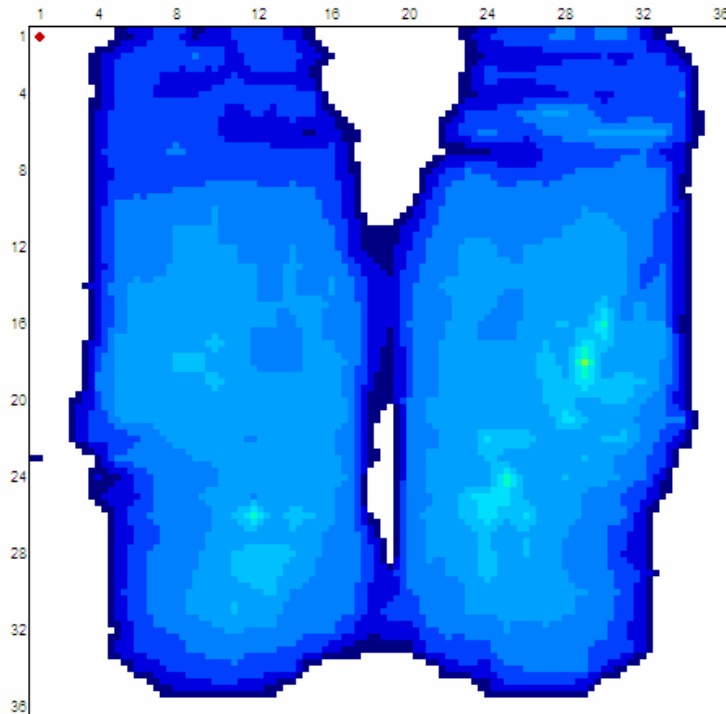


- Post 30 minutes Sitting
 - Avg pressure: 40.73
 - Peak Pressure: 112
 - Contact area: 239
 - PPI: 93.38



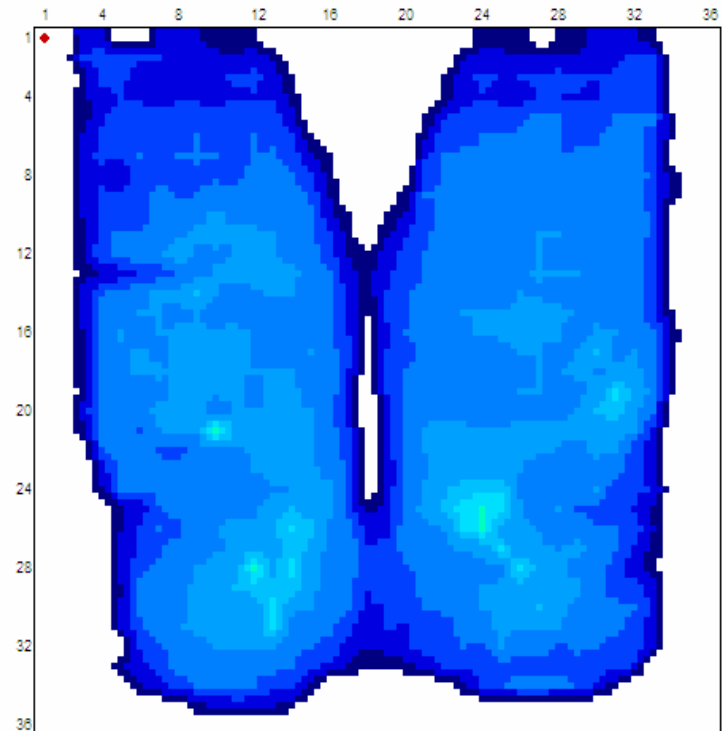
New Forward

- Room Temperature
 - Avg Pressure: 39.06
 - Peak Pressure: 89
 - Contact Area: 243.5
 - PPI: 58



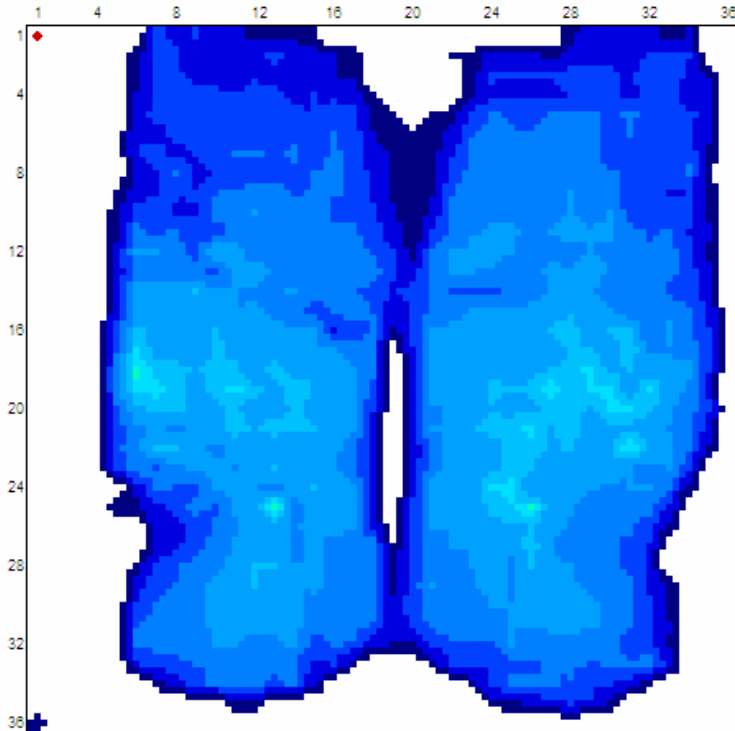
- Post 30 Minutes Sitting

- Avg Pressure: 37.59
- Peak Pressure: 81
- Contact Area: 241
- PPI: 65.56



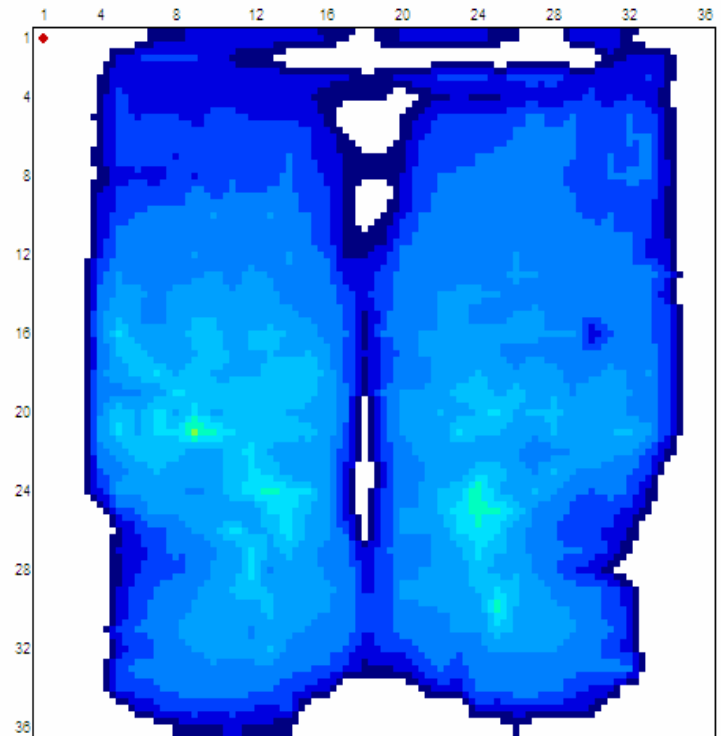
Aged Forward

- Room Temperature
 - Avg Pressure: 38.93
 - Peak Pressure: 79
 - Contact Area: 242.25
 - PPI: 57.44



Post 30 Minutes Sitting

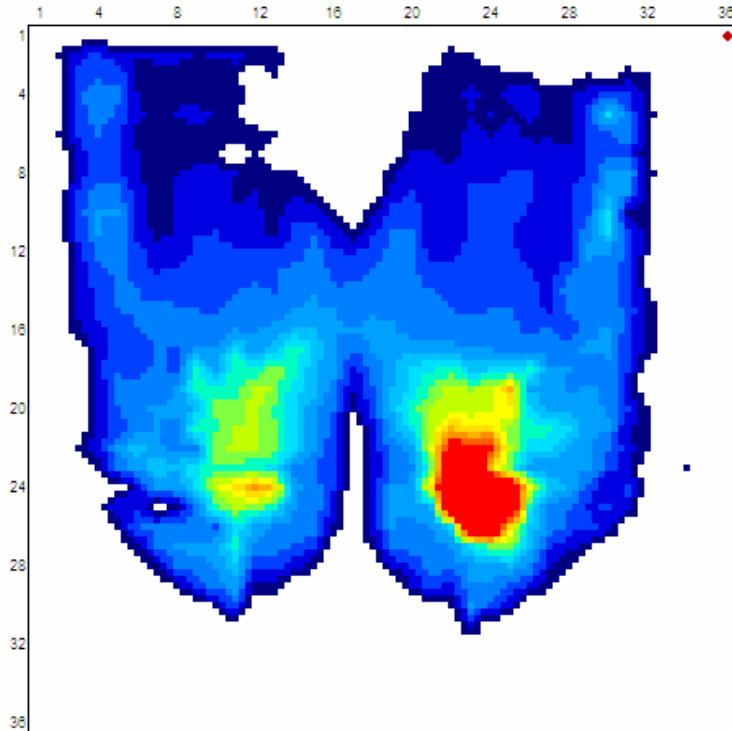
- Post 30 Minutes Sitting
 - Avg Pressure: 39.37
 - Peak Pressure: 88
 - Contact Area: 249.75
 - PPI: 58.56



COLD (23 degrees F)

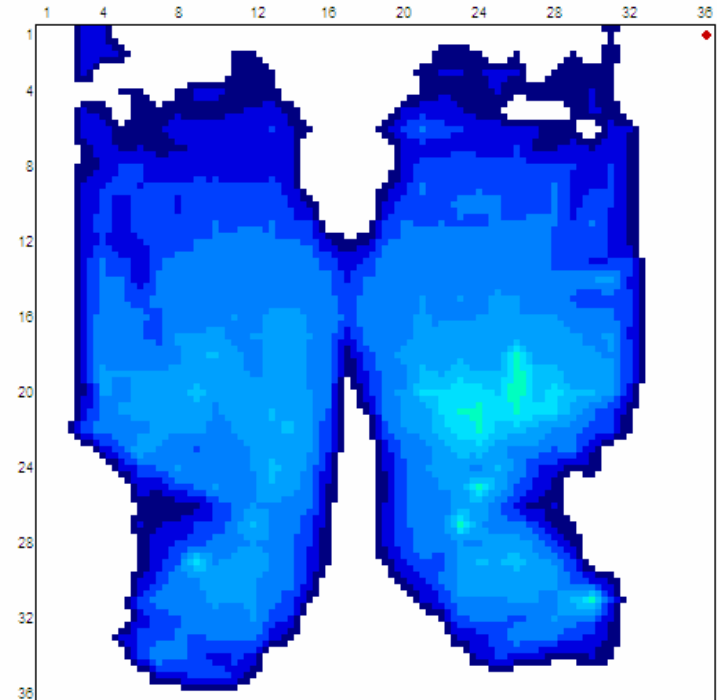
● Competitor

- Avg Pressure: 42.02
- Peak Pressure: 220
- Contact Area: 180
- PPI: 210



● Forward

- Avg Pressure: 35.26
- Peak Pressure: 81
- Contact Area: 202
- PPI: 64 at prox thigh
- PPI: 48 at Right IT



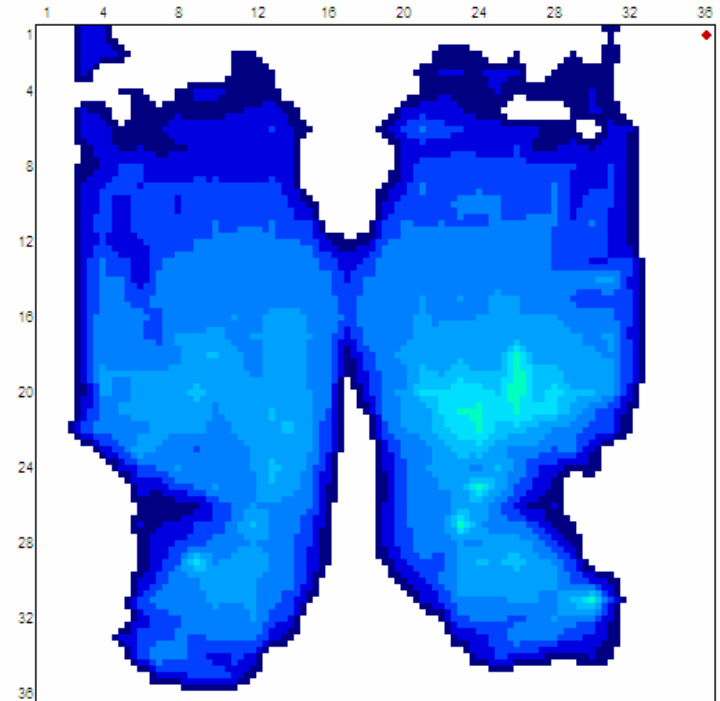
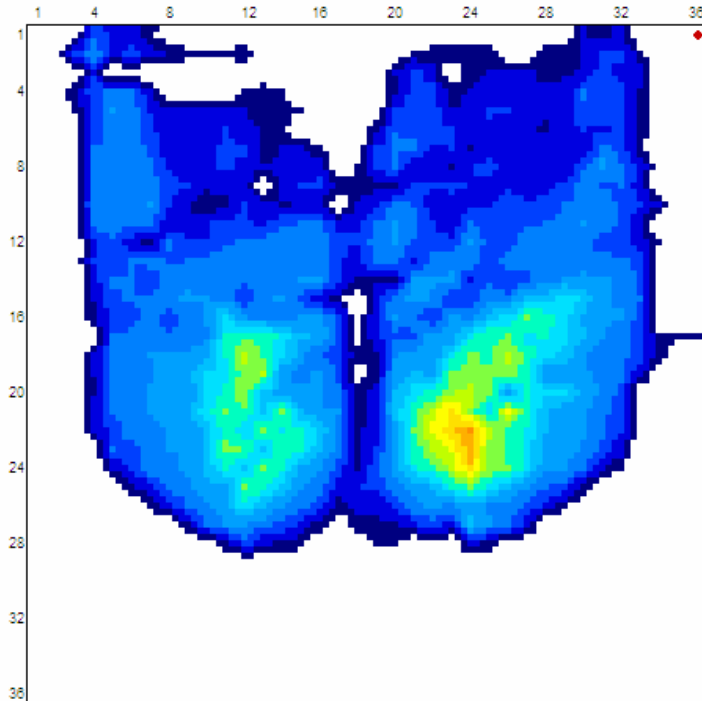
COLD (1 hour post 23F test, in room at 72F, not loaded)

● Competitor

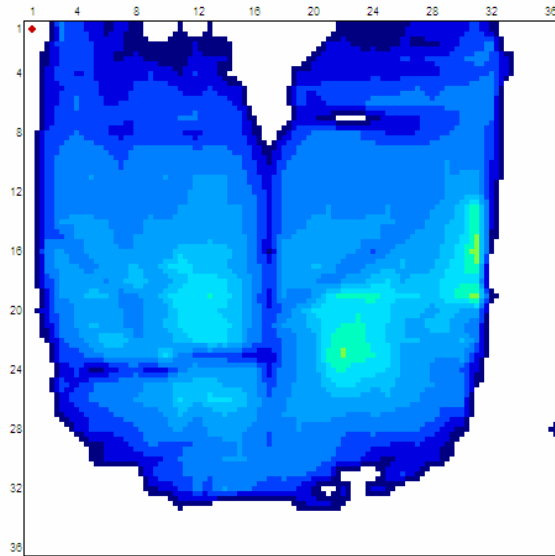
- Avg Pressure: 39.91
- Peak Pressure: 132
- Contact Area: 180.25
- PPI: 105

● Forward

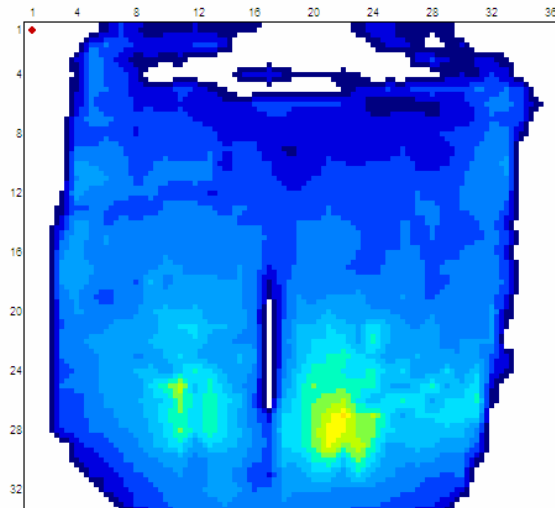
- Avg Pressure: 35.36
- Peak Pressure: 75
- Contact Area: 228.75
- PPI: 68.44 at prox thigh
- PPI: 49.78 at Right IT



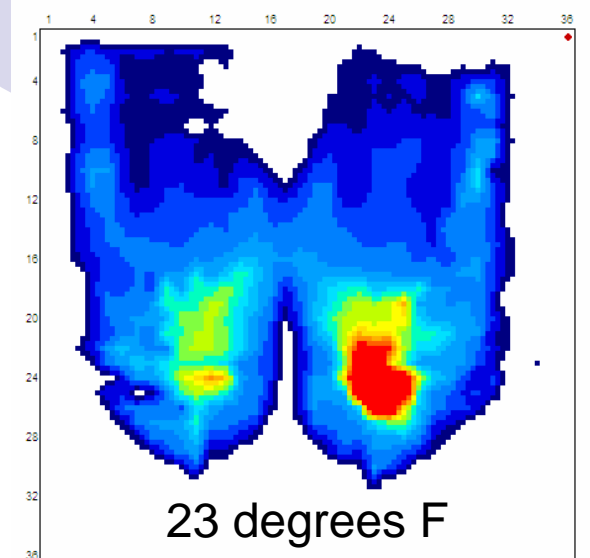
Competitor Summary Images



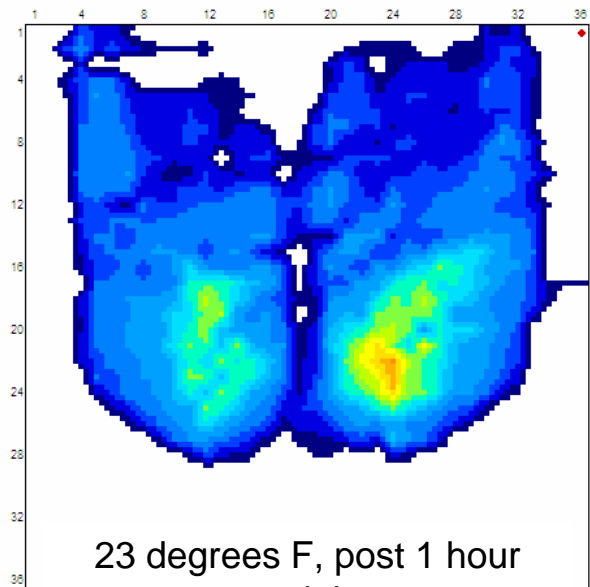
Room Temperature



Room Temperature, post 30 minutes sitting

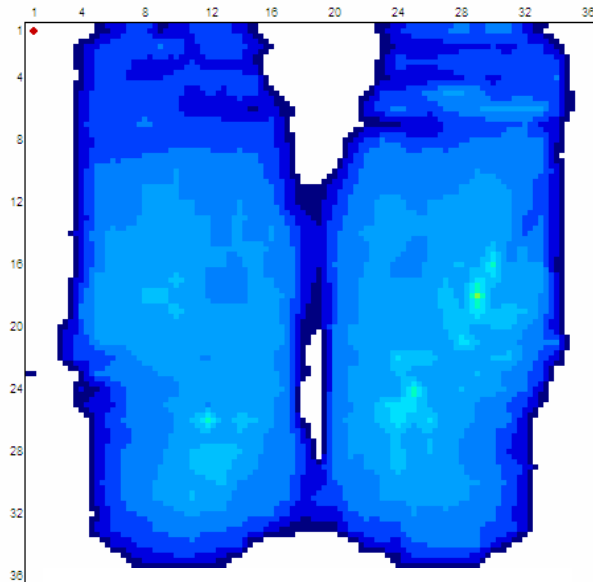


23 degrees F

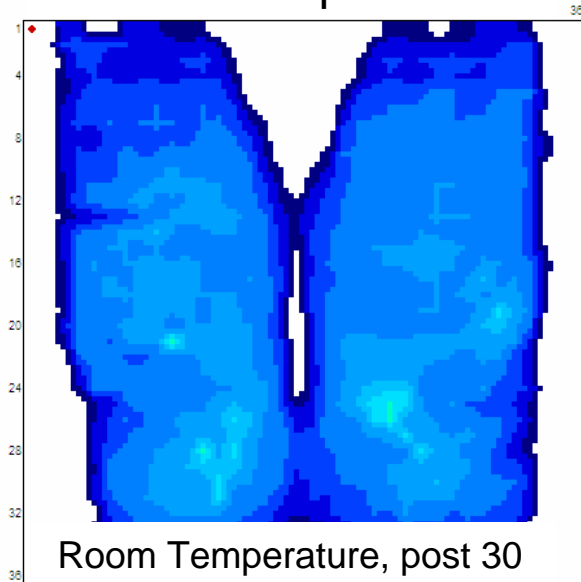


23 degrees F, post 1 hour no sitting

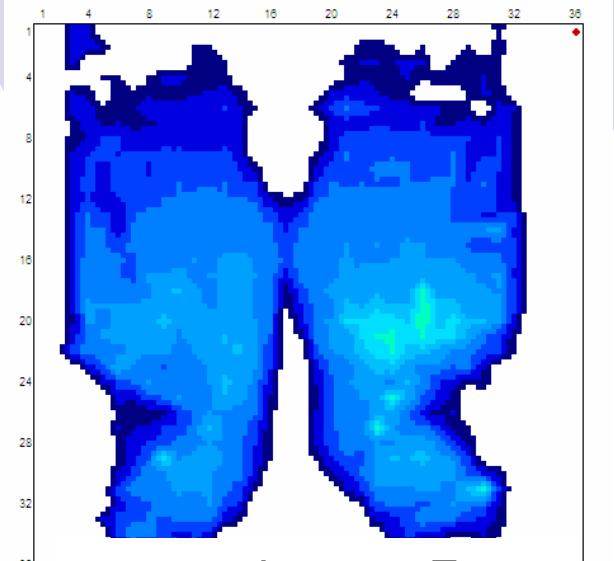
Forward Summary Images



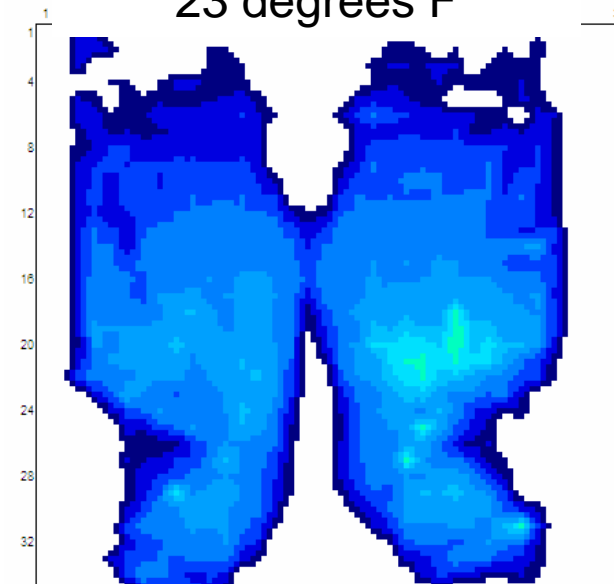
Room Temperature



Room Temperature, post 30 minutes sitting



23 degrees F



23 degrees F, post 1 hour no sitting



Summary

- Competitor visco-elastic biased cushion demonstrates dramatic differences in performance at varying temperatures.
 - Not safe when cold
- Forward Cushion presents near constant performance across broad range of temperatures.
 - Safe when cold
- Implications:
 - When comparing cushions with pressure mapping, assess baseline at room temperature and repeat test at least 30 minutes post sitting time to establish performance change of cushions compared. Side-by-side at room temperature will not reveal performance at elevated temperatures typically found over time.